

---

## **REPORT FOR: HEALTH AND WELLBEING BOARD**

---

**Date of Meeting:** 19 September 2019

**Subject:** **Update on Primary Care Networks and the Integrated Care Partnership**

**Responsible Officer:** Ms Javina Sehgal  
Managing Director  
NHS Harrow CCG

**Public:** Yes

**Wards affected:** Harrow Borough

**Enclosures:** None

### **Section 1 – Summary**

This report is to inform the Board on the latest position in the development in Harrow of Primary Care Networks and the Integrated Care Partnership.

Primary Care Networks are designed to build on current primary care services to enable a greater provision of proactive, personalised, coordinated and more integrated health and social care for their registered patients. There are five networks in Harrow, which became operational on 1 July 2019.

The Integrated Care Partnership is a vehicle for delivering integrated population health and care, in line with the NHS Long Term Plan published in January 2019.

**FOR INFORMATION**

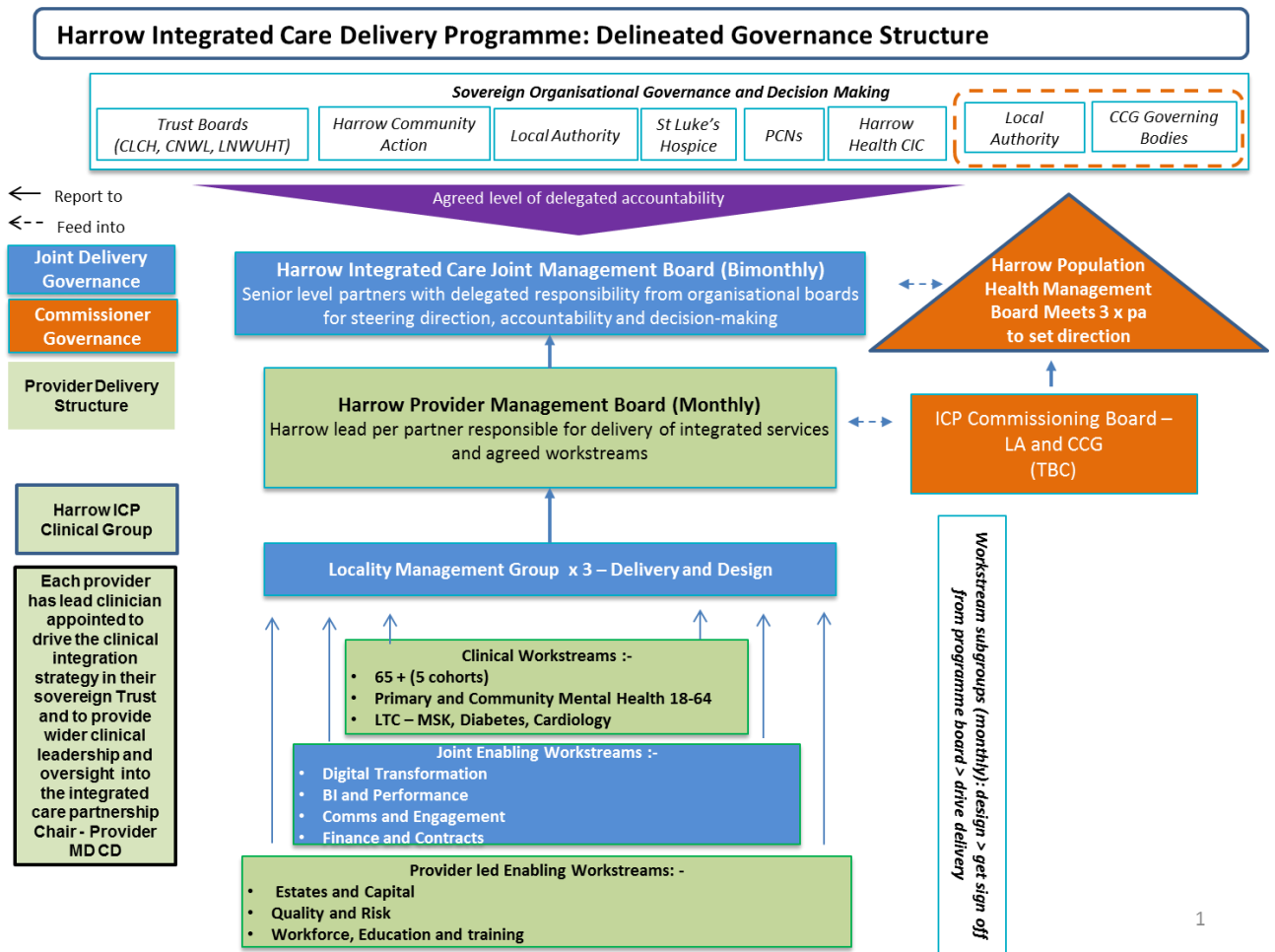
## Section 2 – Report

Following the July board, five PCNs have been approved by NWL HCP and NHS England, and became operational from 1 July 2019. The PCN structure is the foundation for the delivery of Integrated Care in Harrow. The CCG has built fortnightly meetings with PCN Clinical Directors as part of the corporate calendar. The first meeting will be held on the 3rd of September where the format for future meetings will be agreed; part of the meetings will have a themed focus (e.g. where a provider could be asked to attend), and part of the meeting will focus on financial recovery.

PCN Name	Practices Covered	Population Size (as of 1 Jan 2019) <i>based on raw list size</i>	Clinical Director
Harrow Collaborative Network	Civic Medical Centre First Choice Medical Pinner Road Surgery Pinner View Medical Centre Headstone Road Surgery Headstone Lane Medical Centre Savita Medical Centre Zain Medical Centre Kenton Clinic Shaftesbury Medical Centre Kings Road Surgery	44,972	Dr Dilip Patel (Civic Medical Centre)
Healthsense	Ridgeway Surgery Pinn Medical Centre Simpson House Medical Centre Enderley Road Medical Centre Roxbourne Medical Centre Kenton Bridge Medical Centre – Dr Golden Kenton Bridge Medical Centre – Dr Raja	80,779	Dr Amol Kelshiker (Pinn Medical Centre)
Harrow East PCN	Honeypot Medical Centre Mollison Way Surgery Bacon Lane Surgery	28,619	Dr Meena Thakur (Honeypot Medical Centre)
Health Alliance PCN	Aspri Medical Centre Belmont Health Centre Stanmore Medical Centre The Circle Practice The Enterprise Practice Streatfield Medical Centre	52,873	Dr Kaushik Karia (Aspri Medical Centre)
Sphere PCN	Elliott Hall Medical Centre Hatch End Medical Centre Northwick Surgery St Peters Medical Centre Streatfield Health Centre GP Direct	63,362	Dr Ashok Kelshiker (Elliott Hall Medical Centre) Dr Varun Goel (Streatfield Health Centre) <i>Job sharing the CD role</i>
<b>Total</b>	<b>33 Practices</b>	<b>270,605</b>	

### Integrated Care Partnership

Following the briefing given to the board in July, the partnership has continued to show strong commitment and excellent engagement evidenced by a number of strategic and operational meetings held in July and August. The programme governance structure (see below) has been agreed by all partners although it is accepted that this may see some changes as the structure is tried and tested, and also with the development of the NW London CCGs into a single CCG.



1

A roadmap to 20/21 has been developed and the organisational priorities of the partnership are currently being mapped on to the roadmap to promote visibility and alignment across the partnership. A detailed delivery plan will be developed from the roadmap.

Another Strategic Partnership event is planned for 10<sup>th</sup> September 2019 (following the first one held on 18 June 2019). The main focus of this event will be to agree the collective position of the partnership in terms of: the commissioner and provider offer, the 'ask' and outcomes, the financial sustainability of the system and the ICP development plan.

## Section 3 – Further Information

Any further updates will be given verbally at the board.

## Section 4 – Financial Implications

Planned to work within the existing financial envelope.

## Section 5 – Equalities Implications

Primary Care Networks are designed to operate at local population levels to ensure that health inequalities and access to care can be addressed.

For the Integrated Care Partnership, clinical leads are attached to the programme, and quality impact assessments undertaken.

## **STATUTORY OFFICER CLEARANCE (Council and Joint Reports)**

Not applicable

<b>Ward Councillors notified:</b>	<b>NO</b>
-----------------------------------	-----------

## **Section 7 – Contact Details and Background Papers**

**Contact:** Javina Sehgal, Managing Director, Harrow CCG, 020 8966 1147

**Background Papers:** None